

FLORESTA DE CARVALHOS | Oak forest

O CARVALHO DOMINANTE | The dominant Oak



CARVALHO-NEGRAL | Pyrenean oak
Quercus pyrenaica
Eudicotiledonea / Fagaceae

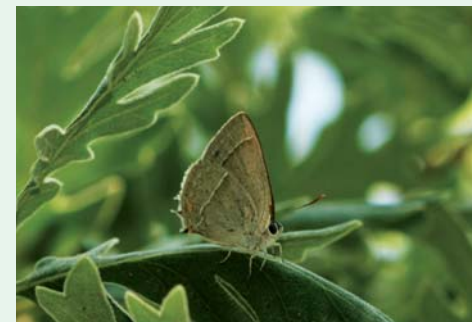
© Frank Pennkamp

BORBOLETAS TÍPICAS DOS CARVALHAIS | Butterflies commonly found in oak tree forests



LUCINA | Duke of Burgundy Fritillary
Hamearis lucina
Insecta / Lepidoptera / Lycaenidae

© Albano Soares



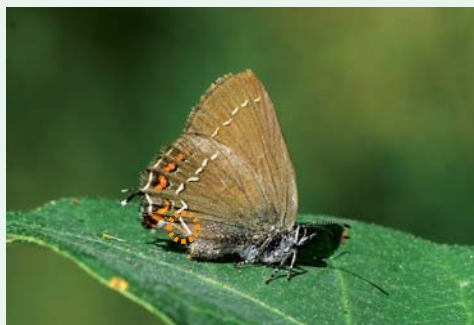
AZUL-DOS-CARVALHOS | Purple Hairstreak
Neozephyrus quercus
Insecta / Lepidoptera / Lycaenidae

© Frank Pennkamp

Esta borboleta prefere voar junto à copa dos carvalhos, pousando frequentemente nos ramos mais altos.

This butterfly prefers to fly near the oak tree canopy, frequently resting on their higher branches.

DUAS BORBOLETAS PEQUENAS DIFÍCEIS DE DISTINGUIR. É PRECISO OBSERVAR A FACE INFERIOR DAS ASAS POSTERIORES | Two small butterflies which are hard to tell apart. The underside of the hind wings needs to be carefully observed

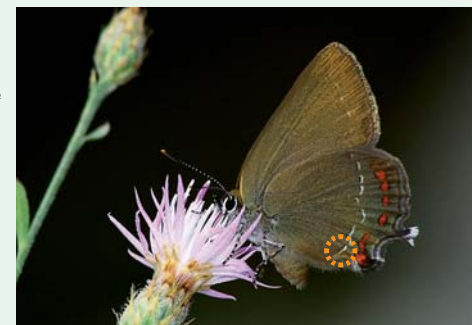


ILICIS | Ilex Hairstreak
Satyrium ilicis
Insecta / Lepidoptera / Lycaenidae

© Albano Soares

A última mancha branca (assinalada na imagem) tem uma orientação diferente das restantes.

The last white spot (shown in the picture) is positioned differently from the others.



ESCULI | Ilex Hairstreak
Satyrium esculi
Insecta / Lepidoptera / Lycaenidae

© Albano Soares

Nesta espécie, a mancha branca assinalada tem a mesma orientação das restantes, paralela à margem da asa.

In this species, the white spot is positioned as the others, parallel to the wing's margin.

